

## Brilliant Show

LED dimmer LED-04B-ANA DMX / DALI



Non-PWM LED dimmer for absolutely harmonious and flicker-free control of LEDs and LED luminaires.

## LED dimmer

**ISYGLT® LED-04B-ANA-DMX** and **ISYnet LED-04B-ANA-DALI**



### Perfect dimming of light in theatres, event halls and concert halls.

With these dimmers, LEDs can be dimmed down to 0% precisely and without flickering. Our non-PWM dimmer is suitable for all types of LEDs that can be controlled via constant current or constant voltage up to 52V. The LED dimmer is available with either DMX or DALI interfaces.

For optimal integration, we also offer our ISYGLT system, which we also use for functional programming of all systems. The ISYGLT system offers the best combination of performance/speed and reliability/failure safety in compliance with all standards, including emergency lighting functionality. Added to this are the almost infinite possibilities of ISYGLT's free programmability.

### Lighting modernisation for the future

The ban on many conventional light sources is causing problems for many building operators. With our dimmers, you can switch to state-of-the-art LED technology, refurbish or replace luminaires and also improve control options.

Our outstanding modules for absolutely flicker-free dimming of LEDs and LED luminaires.



#### Control:

- ISYGLT BUS
- DMX-512 8 bit and 16 bit
- DALI BUS
- emergency operation



## Non-PWM dimmer

This dimmer works absolutely without pulse width modulation. It enables to control perfectly the LEDs at a dimming resolution of 16 bits (internal resolution for ISYGLT operation) in the brightness range between 0% and 100%. The LED dimmer can be set from speed calculation to absolute time calculation by parameterisation per channel. With this, all sorts of control tasks can be easily realised: from individual light dimming to use for elaborate light and colour scenarios.



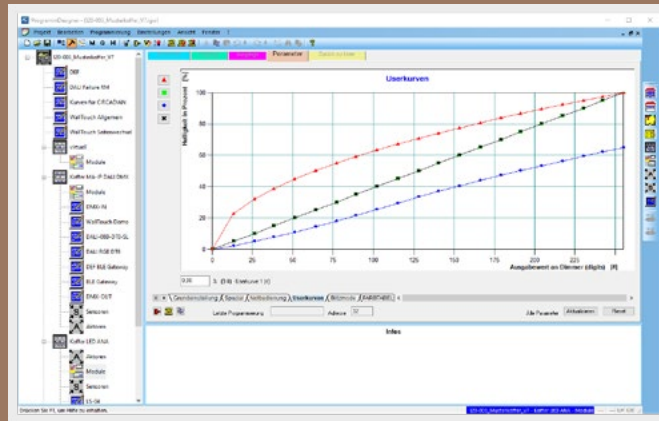
### Universally useable:

- special cable lengths are possible
- dimming of constant-current and constant-voltage LEDs
- stepless current adjustment

## Software

### Parameterisation with ProgrammeDesigner

The ISYGLT ProgrammeDesigner offers a wide range of parameterisation options:



#### 1. setting of various dimming curves

#### 2. minimum and maximum values

#### 3. operating modes:

- 4 individual channels
- RGB + 1 individual channel (red, green, blue and one independent single channel)
- RGBW, red, green, blue and white
- colour temperature control (daylight simulation)
- online function switching via extra time constant on channel 2



## Suitable for design luminaires

### Wide performance spectrum

Each channel is individually stepless adjustable from 250mA to 1550mA and is reliably processed.

### Flexible cable lengths

Very delicate designs are possible because the necessary ballasts can be placed at a great distance from the luminaires.

### Efficient maintenance

The design allows the installation of central dimmer cabinets and offset cabinets, thus significantly minimising the maintenance effort.

## Operating fields

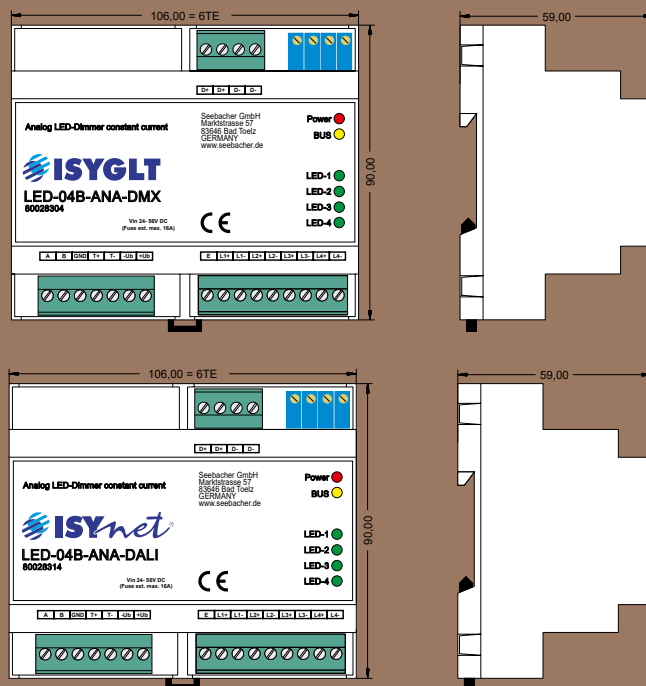
This dimmer is predestined for all areas where attention is paid to high-quality lighting. The effects of common PWM dimming have not been fully investigated, but experts consider it to be a possible health problem. Thus, the use of non-PWM dimming is particularly recommended in areas where people spend longer periods of time and where high demands are placed on the quality of light.



### Outputs:

- 4 outputs separately adjustable with 250mA to 1550mA each for power LEDs
- 1 emergency operation input, e.g. emergency operation = 100%
- 1 pin for external temperature sensor
- 1 ISYGLT, DMX or DALI pin

## CAD views



## Technical Data

Type designation	LED-04B-ANA-DMX	LED-04B-ANA-DALI
Article no.	80028304	80028314
Operating voltage	24V to 56V DC	
Mains fuse	max. 16A at Umax 56V DC	
Output	4 x constant current, separately adjustable in the factory with 250mA to 1550mA each for power LEDs (please specify the desired current value for each circuit when ordering)	
Power loss	idle circuit: 0.162W / channel, full load and worst conditions: 2.5W / channel	
Dimming resolution	16 Bit	
Design	Plastic housing light grey, can be snapped onto 35 mm mounting rail 6 HP	
Dimensions	LxWxH 106x90x59mm REG (6 HP)	
Weight	250g	
Connection	screw terminals 2.5mm <sup>2</sup>	
Operating temperature	-10°C to +45°C	
Storage temperature	25°C to +70°C	
Humidity	0...85 % r.h. non-condensing	
Protection	IP 20 when not installed	
Cable length power supply to LED dimmer	max. 20m	
Cable length LED dimmer up to last LED	max. 50m	
Protection class	III	
CE mark	yes	

## Usages

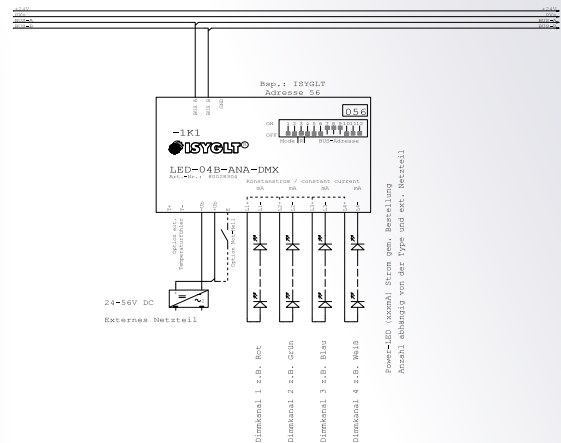
## Examples of connections

### Concert halls

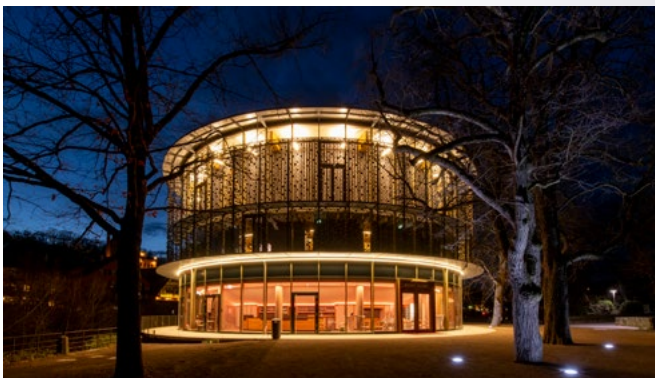


Hall lighting that behaves 100 % camera-compatible.  
Kulturpalast Dresden / © Marken fotografie

### Control via ISYGLT

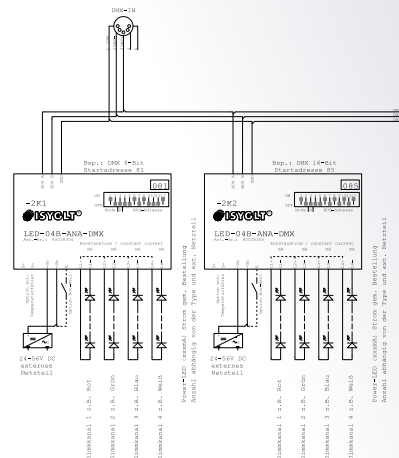


### Theatre



Theatre lighting that can be maintained with little effort thanks to a centrally positionable mounting.  
The 'Neues Globe' at night / © Jürgen Weller

### Control via DMX-512

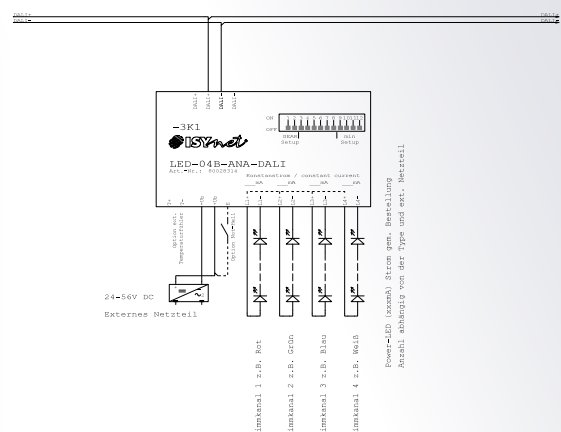


### Planetariums



Dimming behaviour that has no equal: especially in the lowest range, dimmable down to only 0.001 % luminous flux.  
© Planetarium Bad Tölz

### Control via DALI







## Professional dimming

Not the right dimmer for your requirements? We have dimmers for virtually all applications in our product range. Please contact us!



Seebacher GmbH  
83666 Waakirchen  
Phone: +49 8021 50434-0

Email: [info@seebacher.de](mailto:info@seebacher.de)  
Internet: [www.seebacher.de](http://www.seebacher.de)